

781.1 – 783.1



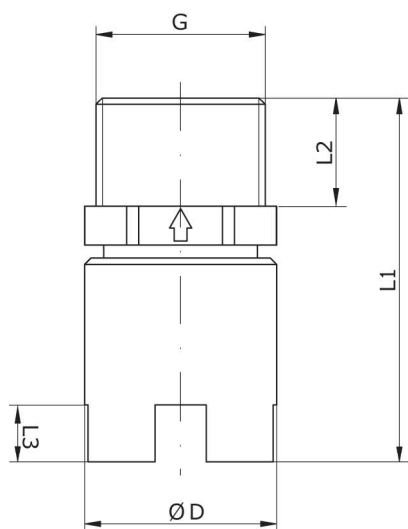
781.1 to 783.1 in survey

- Compact design
- Easy to mount
- Maintenance-free
- High-quality materials

Technical data

Type	Nominal width DN	Max. admissible operating pressure		Max. flow rate		Max. pump stroke volume cm ³
		bar	psi	l/h	gal/h	
781.1 / 781.2	8	10	145	200	53	20
783.1	20	10	145	1450	383	190

Dimensional drawing



Dimensional chart

Indications in mm / inch

Type	G	D		L1		L2		L3		Weight (kg)	
		mm	in	mm	in	mm	in	mm	in	PP-FRP	PVDF-FRP
781.1 / 781.2	G 3/4	30	1,18	50	1,97	18	0,71	6	0,24	0,02	0,04
783.1	G 1 1/4	50	1,97	80	3,15	25	0,98	6	0,24	0,05	0,2

Indication of weight for basic design acc. to order information

Order information

Foot valve



Basic design

- Ball: PTFE
- Sieve: ETFE
- Mesh size: 1mm

Type	Thread connection	Material			
		PP/PP-FRP / FPM	PP/PP-FRP / EPDM	PVDF/PVDF-FRP / FEP-cov.	
		Article-No.	Article-No.	Article-No.	Article-No.
781.1	G 3/4	-	-	30073008	
783.1	G 1 1/4	37600553	37600552	30073018	



Basic design

- Ball: PTFE
- Sieve: ETFE
- Mesh size: 1mm

Type	Thread connection	Material			
		PVC-U / FPM	PVC-U / EPDM	PP-FRP / EPDM	PP-FRP / FPM
		Article-No.	Article-No.	Article-No.	Article-No.
781.1	G 3/4	37605765	37606305	37605766	37606306